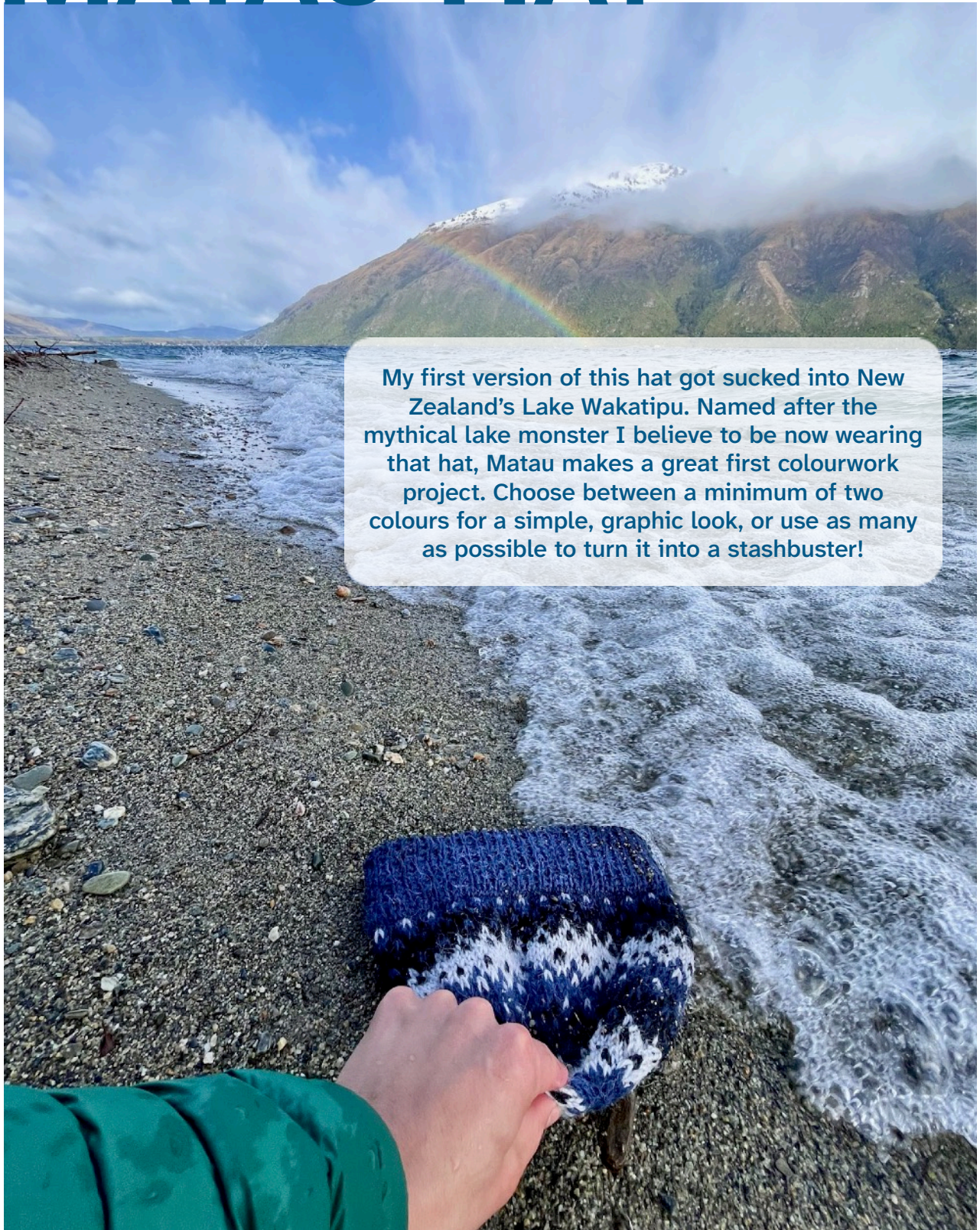


MATAU HAT



My first version of this hat got sucked into New Zealand's Lake Wakatipu. Named after the mythical lake monster I believe to be now wearing that hat, Matau makes a great first colourwork project. Choose between a minimum of two colours for a simple, graphic look, or use as many as possible to turn it into a stashbuster!

DESIGN BY SHENA TSCHOFEN

SKILLS REQUIRED

Knit, purl, two-colour stranded knitting, basic decreases, knitting in a small circumference, reading a chart; tutorial links are included for Colour Dominance and Judy's Magic Cast-On.

CONSTRUCTION PLAN

Using two pairs of circular needles and Judy's Magic Cast On, stitches are cast on for a k1, p1 rib double brim. Once knit to twice its finished length, the brim is folded over on itself and knit together with the provisional stitches at the cast-on edge. Next, the colourwork chart is established for the main body of the hat and worked to a given length. Finally, crown decreases are worked.

SIZES

Child (Adult, Large Adult)

Finished hat circumference: 48 (54, 60) cm/19 (21.25, 23.5) in

Finished hat height: 21.5 (24, 26.5) cm/8.5 (9.5, 10.5) in

Choose a size approximately 5 cm/2 in smaller than your head circumference.

GAUGE

Stranded Chart: 20 sts and 23 rows = 10 cm/4 in using gauge-size needle

YARN

Countrywide Yarns *Alpex 10ply* (50 g/85 m, 80% wool/20% alpaca) in blue (MC), light grey (CC1) and black (CC2): 1 ball of each colour. This yarn is a 3-ply with 9wpi and a suggested gauge of 18 sts per 10 cm/4 in. (Note that the "10ply" in its name designates a worsted or aran weight yarn, not the number of plies themselves.)

55, (70, 85) m/60 (76, 93) yd MC, 50 (63, 77) m/54 (69, 84) yd CC1, and 23 (29, 35) m/ (25, 32, 39) yd CC2.

NEEDLES AND NOTIONS

For reference, gauge was achieved using a 4 mm/US 6 needle.

3.5 mm/US 4 (below-gauge size) 40 cm circular needle for working Brim

3.5 mm/US 4 60 cm (or longer) circular needle for Judy's Magic Cast-On

4 mm/US 6 (gauge-size) 40 cm circular needle

4 mm/US 6 (gauge-size) needle of preferred type for working in a small circumference

6 stitch markers, including one unique BOR marker

Tapestry needle for weaving in ends

SPECIAL TECHNIQUES & WHY I'M USING THEM

Judy's Magic Cast On cocoknits.com/blogs/knit-tutorials/how-to-provisional-cast-on-with-judy-s-magic-co

A two-sided cast-on that will allow you to knit the double brim without picking up stitches

Colour Dominance brooklyntweed.com/pages/how-to-knit-color-dominance-101-video-tutorial

Optional, but will give the pattern a more consistent look. Whichever colour is used less on any given round should be the dominant colour.

ABBREVIATIONS

BOR = beginning of round

CC1 = contrast colour 1

CC2 = contrast colour 2

CO = cast on

dec(s) = decrease(s)

k = knit

k2tog = knit 2 together

m = marker

MC = main colour

p = purl

patt = pattern

pm = place marker

rnd(s) = round(s)

st(s) = stitch(es)

STRANDED CHART

Rnds 1-2: K around in MC.

Rnd 3: *K3 MC, k1 CC1 around.

Rnd 4: *K1 MC, k1 CC2, k2 MC around.

Rnd 5: *K3 CC2, k1 MC around.

Rnd 6: *K1 CC2, k1 MC, k2 CC2 around.

Rnds 7-8: K around in CC2.

Rnd 9: *K3 CC2, k1 MC around.

Rnd 10: *K1 CC2, k1 CC1, k2 CC2 around.

Rnd 11: *K3 CC1, k1 CC2 around

Rnd 12: *K1 CC1, k1, CC2, k2 CC1 around.

Rnds 13-14: K around in CC1.

Rnd 15: *K3 CC1, k1 CC2 around.

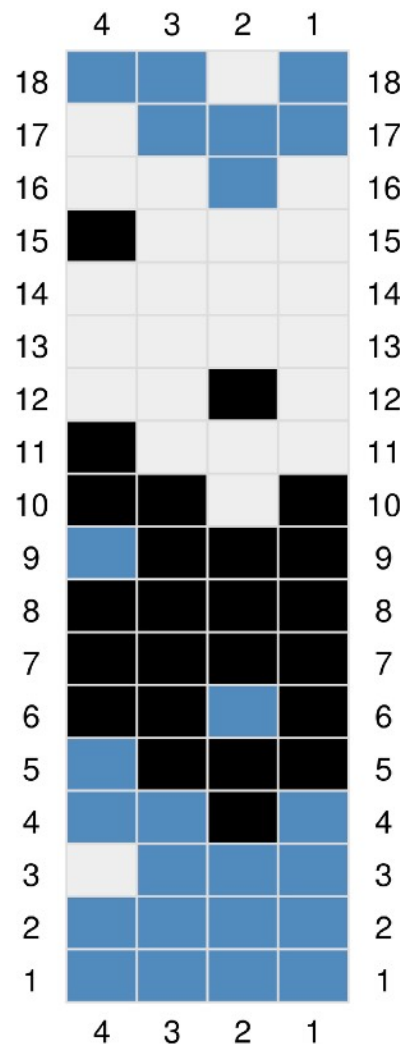
Rnd 16: *K1 CC1, k1 MC, k2 CC1 around.

Rnd 17: *K3 MC, k1 CC1 around

Rnd 18: *K1 MC, k1 CC1, k2 MC around.

BRIM

Judy's Magic Cast On requires two pairs of needles. Holding the longer below-gauge-size circular needle below the shorter one and with CC1, CO 96 (108, 120) sts using Judy's Magic Cast On.



Pm for BOR and join to work in rnd, taking care not to twist the sts.

If using interchangeable needles, the bottom needles can be exchanged for stoppers at the ends of the cables.

Work k1, p1 rib for 5 (6, 7) cm/2 (2.25, 2.75) in. Switch to MC. Work rib for another 5 (6, 7) cm/2 (2.25, 2.75) in.

Fold brim inwards, so that the CO edge is behind the sts on the working needle. Insert needle through the next st from the working needle and its corresponding st from the CO edge and knit them together.

Continue working top and bottom of brim together to BOR. Switch to gauge-size needles.



HAT BODY

Work Stranded Chart (page 3) until hat measures 12 (13, 14.5) cm/4.75 (5, 5.75) in from bottom of brim. Carry unused colours up the inside of the hat without breaking the yarn.

CROWN DECREASES

Decreases will disrupt the Stranded Chart. Because the decreases are based off a multiple of 6 and the chart is a multiple of 4, they are not all placed at the same part of the chart. To know where to place which colour when decreasing, k2tog with whichever colour continues the pattern in

that section of the current round. When passing over the marker, look a few stitches beyond the marker to see how to align the pattern over the next few stitches.

Setup Rnd: *Work 16 (18, 20) sts in patt, pm; rep from * around (last m is existing BOR m).

Rnd 1: *Work in patt to 2 sts before m, k2tog, sl m; rep from * around. 6 sts dec.

Rnd 2: Work around in patt.

Rep Rnds 1 and 2 8 (9, 10) times total. 48 (54, 60) sts.

Then work Rnd 1 4 (5, 6) times. 24 (24, 24) sts.

Switch to needles for small circumference when necessary.

Next 2 Rnds: K2tog to end of rnd. Break yarn and draw through 6 remaining sts.



FINISHING

Weave in ends, block and enjoy!

**ABOUT THE DESIGNER**

Shena Tschofen is a multidisciplinary artist based in Montreal, Canada. In addition to publishing knitting patterns, she makes functional recycled-textile art objects under the name Frog & Woad, and has toured internationally as a professional circus artist and musician.

Instagram: [@shena.tschofen](https://www.instagram.com/shena.tschofen) and [@frogandwoad](https://www.instagram.com/frogandwoad)

Ravelry: [ravelry.com/stores/shena-tschofen-designs](https://www.ravelry.com/stores/shena-tschofen-designs)

Web: shena.me and frogandwoad.ca